

A modern modular building with a grey tiled terrace and a blue sky background. The building features large glass windows and a white facade. The terrace is made of grey square tiles and is bordered by a low wall. The background is a clear blue sky with a few green plants visible on the roof of the building.

VANDIDAD **MODULAR** **BUILDING**



SINCE 2005
VANDIDAD CO.

Founded by professionals in the construction industry in 2005 with more than 17 years of accumulated experience, Vandidad Engineering Design offers high-quality concrete products and building solutions combining engineering, project management excellence, production technology, and aesthetic designs. We take great pride in making strong partnership with our customers to bring their technical demands, building concepts and needs into reality.



With advanced and modern machinery and a concrete production plant, our company can produce special concretes, including Structural Ultra-Lightweight Nano Concrete and all kinds of prefabricated concrete segments, furthermore we have successfully implemented many projects.

We strive continuously to create value and make a difference in the world. Now we dedicate our resources to providing people with affordable living spaces everywhere.

IT IS EASIER
THAN YOU THINK

VANDIDAD MODULAR BUILDINGS

According to the progress of industrial construction technologies and the demand for lightweight, resistant and portable buildings all over the world, Vandidad Engineering Design and its expert team in the R & D department started to build prefabricated modular houses by conducting structural studies and using its Lightweight Concrete.



IT IS STRONGER — THAN YOU THINK —

● **Quick construction and installation** (about 45 days)

● **The possibility of multiple transportations**

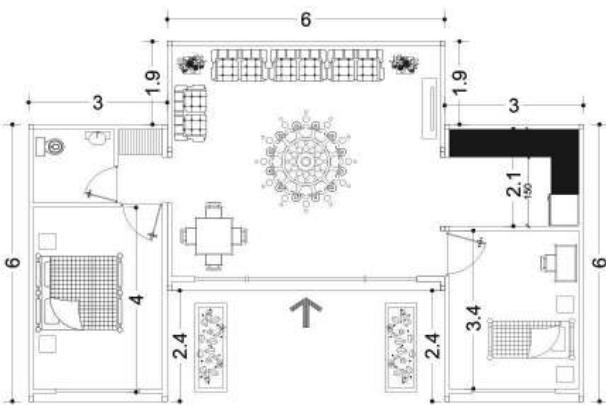
● **Modularity and expandability in plan and height**

● **Resistant to earthquakes and storms**

● Furthermore, the modular nature of our products makes it possible to export them to any place around the world via alternative modes of transportation



VANDIDAD MODULAR BUILDING

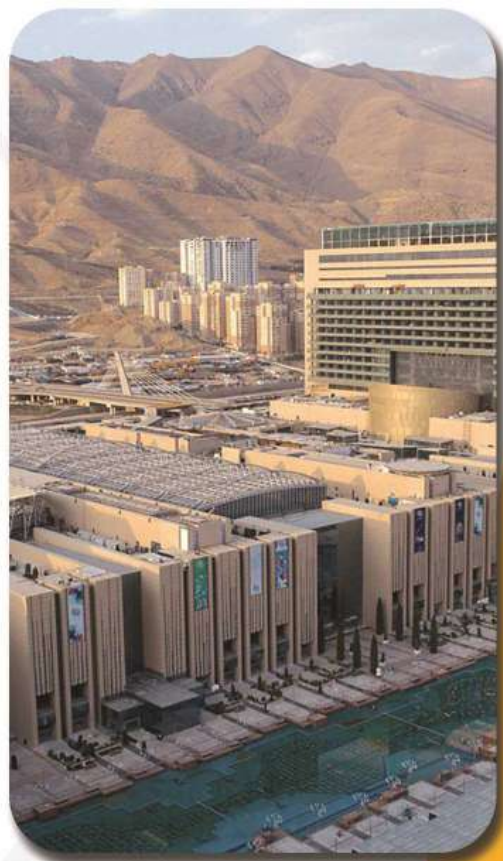


Thanks to the rigid structure and modular system, these houses offer superior portability and flexibility in plan, dimensions and height. Each standard box is prefabricated in 600 x 240/300 cm and height of 300 cm and will stand on the foundation in any number and combination in the plan. These structures do not need a concrete foundation due to their solid floor.

Technical Specifications

Structure	Steel Column	Rectangular Tube
	Lateral force resisting system	Moment Frames (Rigid Connections)
	Steel Beams	C-Shape Steel Beams
	Wall	The Mesh Forms & Granulated Concrete/ Drywall
	Deck (floor & roof)	Reinforced Concrete
Roof	Decorative layer (on demand)	Cement Plaster / Resin / Epoxy coating
	Waterproof layer	Roof Felt / Waterproofing membrane
	Insulation (on demand)	Extruded Polystyrene (EPS) Panel / PU Sandwich Panels / Glass Wool
	Ceiling	PVC Ceilings / Plaster Ceiling / Calcium Silicate Board +Keel / Gypsum Board +Keel
Walls	Inner wall decoration	Drywall / Gypsum board +keel / PVC panels / Plaster / Wooden wall panels
	Outer wall decoration	White cement coat + ThermoWood
	Windows	UPVC frames + Double glazed window
	Doors	Wood / Plywood / HPL
Floor	Decoration	PVC flooring / Carpet / Laminate flooring / Solid wood flooring / Ceramic tiles / Porcelain tiles
	Insulation layer	Glass wool / Extruded Polystyrene (EPS) Panel
Mechanical system	Plumbing	Pex / CPVC
	Heating	Boiler & Radiator System / In-Floor Radiant / Heat Pump (Ductless Heating System)
	Air-conditioning systems	Split System Air Conditioner
	Sewage System	Acrylonitrile Butadiene Styrene (ABS) Piping / Unplasticised Polyvinyl Chloride Polymer (PVC-U)
Electrical system	Electrical supply system	Conduit Wiring + Incoming Power Lines, Service Panel, Electrical Boxes
	Electrical Terminals	Receptacles (Outlets), Switches, Lights
Kitchen	Inner wall decoration	Ceramic Tile
	Floor Decoration	PVC flooring / Laminate flooring / Solid wood flooring / Ceramic tiles / Porcelain tiles
	Cabinet	MDF / Highgloss / HPL
	Kitchen Appliances	Desktop Gas Stove + Sink & Faucet + Kitchen Hood
Bathroom	Inner wall decoration	Ceramic Tile
	Floor Decoration	Ceramic Tile
	Components	Toilet + Sink + Shower

PROJECTS



2018 IRAN MALL

Tehran – IRAN
40000 concrete segments in 75 days
Backfill of Ceramic Tiles
Dimension: 120*60*4.6 cm
Specific Strength: 110 MPa



2019 PALIZZI

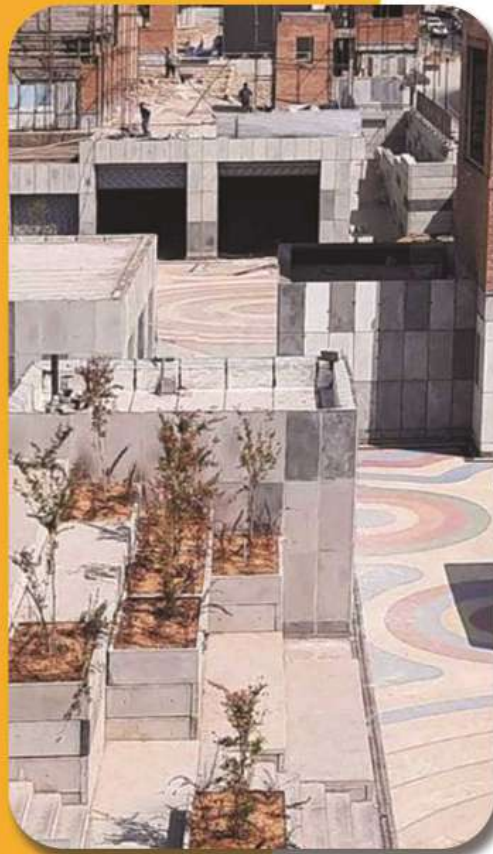
Tehran – IRAN
Commercial Complex
1600 m2 Prefabricated U-Shaped
Concrete segments



2019

DARABAD

Tehran – IRAN
Residential Complex
500 m² Prefabricated Concrete segments
U-Shaped and 60*120 concrete Tiles



2020

BERYANAK

Tehran – IRAN
BERYANAK Metro Station Courtyard
3500 m² Prefabricated Exposed Concrete
segments

VANDIDAD



vandidad.co



@MTVandidad



+98 910 493 2179



info@vandidad-co.com



+1-604-9108570 | +98-26-4308 | +98-26-453 32 58



Canada Branch: 1703-2008 Fullerton Ave., North Vancouver, BC., CANADA



Factory: Sepehr10, Sepehr Industrial City, Nazar Abad, Alborz, IRAN



Head Office: 3-106 Marzdaran Ave., Tehran, IRAN

WWW.VANDIDAD-CO.COM

ENGINEERING DESIGN
VANDIDAD

